

Instructions for Use

Elastic Control Slides

CATALOG NUMBER	DESCRIPTION	UNIT OF MEASUREMENT
CS011-PS-25	Elastic Control Slides, Adhesion, 1 stained/24 unstained	1 set
CS011-PS-100	Elastic Control Slides, Adhesion, 1 stained/99 unstained	1 set

INTENDED USE

Qualitative control for elastic fibers.

TISSUE

Known Positive Tissue

FIXATION

10% Buffered Formalin

TECHNICAL INFORMATION

Paraffin sections cut at 5 microns

USE WITH MASTERTECH VERHOEFF'S ELASTIC STAIN KIT

Kit Size	Part Number
100 mL	KTVEL
Pint	KTVELPT
Liter	KTVELLT

MASTERTECH VERHOEFF'S ELASTIC STAIN PROCEDURE

1. Deparaffinize and hydrate to running tap water.
2. Immerse in Verhoeff's Elastic Stain for 15 minutes.
3. Rinse in running DI water for 1 minute.
4. Immerse in 3% Potassium Metabisulfite for 30-60 seconds until section is colorless.
5. Rinse in running tap water for 1 minute.
6. Immerse in 2% Ferric Chloride for 1-5 minutes. Differentiate until elastic fibers are black (use microscope).
7. Rinse in running tap water for 1 minute.
8. Immerse in 5% Sodium Thiosulfate for 1 minute.
9. Rinse in running tap water for 1 minute.
10. Immerse in Van Gieson's Stain for 30 seconds.
DO NOT RINSE
11. Dehydrate in 3 changes of Absolute Alcohol, 1 minute each change.
12. Clear in 3 changes of Xylene, 1 minute each change.
13. Coverslip with Acrymount Plus or any other acceptable mounting medium.

RESULTS

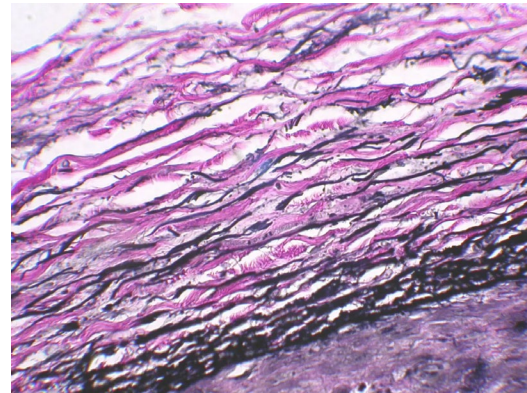
Elastic fibers – Black

Collagen – Red

Other tissue elements - Yellow

This protocol is a recommendation only. Modifications may be necessary.

Please contact productsupport@statlab.com with any additional questions.



StatLab Medical Products
2090 Commerce Drive, McKinney, TX 75069
StatLab.com Phone: +1 800-442-3573

